

# ***Energizer***®



EZG2800i  
EZG2800iUK  
**ORIGINAL INSTRUCTIONS**

***Energizer***®

©2018 Energizer. Energizer and certain graphic designs are trademarks of Energizer Brands, LLC and related subsidiaries and are used under license by Builder SAS.

All other brand names are trademarks of their respective owners.

Neither Builder SAS nor Energizer Brands, LLC is affiliated with the respective owners of their trademarks

## **Thanks for choosing the EZG Series!**

You're excited to power up, so we'll keep this brief. Let's get started!

**CONTENTS****PAGE**

<b>Safety First</b>	8
Safety while using your generator	8
Understanding AC safety	9
Safety while maintaining your generator	9
Other safety tips	10
<b>Learn About Your Generator</b>	11
Identification of components	11
Making sure you have everything	13
<b>Setting Up Your Generator</b>	14
Checking the oil level	14
Checking the air filter	15
<b>Using Your Generator</b>	17
Initial startup of your generator	17
Operating your generator	19
Shutting off your generator	22
Using your generator with appliances	23
Using the generator to charge automotive batteries	23
<b>Maintaining Your Generator</b>	25
Maintenance Schedule	25
General inspection tips	25
Cleaning the air filter	26
Changing the engine oil	27
Replacing and cleaning the spark plug	28
Handling and storage	29
<b>Troubleshooting</b>	30
<b>Specifications</b>	34
<b>Wiring Diagram</b>	35



# Chapter 1 — Safety First

Playing it safe when working with power equipment is always a good idea. Here are some important precautions to make sure you stay safe.

## 1.1 Safety while Operating Your Generator

- Always perform an oil, fuel and air filter check before starting the engine.
- Properly clean and maintain the equipment.
- Operate the generator according to instructions for safe and dependable service.
- Before operating the generator, read the user guide carefully. Otherwise, it may result in personal injuries or equipment damage.
- Never run the generator in an enclosed area to avoid harm from exhaust emissions of a poisonous carbon monoxide gas.
- The engine exhaust from this product contains chemicals known to cause cancer, birth defects or other reproductive harm.
- Be careful not to touch the exhaust system, compressor pump or discharge tubing during operation due to risk of burns.
- Pay attention to the warning labels. The engine exhaust system will become heated during operation and remain hot immediately after the engine is stopped.
- Gasoline is a highly flammable and explosive liquid. Refuel in a well ventilated area with the engine stopped.
- This portable generator is not for use with gasoline/ethanol blends with over 15% ethanol.
- When refueling the generator, keep it away from cigarettes, open flames, smoke and/or sparks.
- Place the generator at least 3 feet away from buildings or other equipment during operation.
- Run the generator on a level surface. Tilting the generator may result in fuel spills.
- Know how to stop the generator quickly and understand operation of all the controls. Never permit anyone to operate the generator without proper instructions.
- Keep children, pets and machinery with rotating parts away during

operation.

- Do not operate the generator in rain or snow.
- Do not allow any moisture to come in contact with the generator.
- Do not touch the spark plug while the engine is operating or shortly after the engine has been shut down

## 1.2 Understanding AC Safety

Before connecting the generator to an electrical device or power cord:

- Make sure that everything is in proper working order. Faulty devices or power cords can lead to an electrical shock.
- Turn off the generator immediately if the device begins to operate abnormally. Then disconnect the device and investigate the problem.
- Make sure that the electrical rating of the device does not exceed that of the generator. If the power level of the device is between the maximum output power and the running power of the generator, the generator should not be used for more than 30 minutes.
- **WARNING:** Connections for standby power to a building's electrical system must be done by a qualified electrician and must comply with all applicable laws and electrical codes (National Electrical Code, NFPA 70). Improper connections may cause serious injuries to electrical workers during a power outage, and when the utility power is restored, the generator may explode or cause fires. The generator shall be connected through transfer equipment that switches all conductors other than the equipment grounding conductor. The frame of the generator shall be connected to an approved grounding electrode.
- For power outages, permanently installed stationary generators are better suited for providing backup power to the home. Even a properly connected portable generator can become overloaded. This may result in overheating or stressing the generator components, possibly leading to a generator failure.

## 1.3 Safety while Maintaining Your Generator

- After any maintenance is performed, wash immediately using soap and clean water because repeated exposure to lubricant may cause skin irritation.

- Do not clean the filter element with flammable liquids like gasoline because an explosion may occur.
- Turn off the engine before performing any maintenance. Otherwise it can cause severe personal injury or death.
- Allow the generator set to cool down before performing any maintenance.
- Always wear safety glasses when cleaning the generator set with air.
- Do not clean the generator set with a pressure washer because it can cause damage to the generator set.
- Before working with batteries, ventilate the area, wear safety glasses, do not smoke and always disconnect the negative cable first and reconnect it last.
- Use rubber gloves when coming into contact with engine oil.
- Always stop the generator set before removing the oil filler cap.
- Only qualified maintenance personnel with knowledge of fuels, electricity, and machinery hazards should perform maintenance procedures.
- Lubricate all exposed metal parts regularly. See chapter 5.1 for maintenance schedule.

## 1.4 Other Safety Tips

- To avoid breathing in poisonous carbon monoxide from the exhaust gases, adequate ventilation should be provided if the generator set is running in a partially enclosed space.
- If the generator set is stored outdoors, check all the electrical components on the control panel before each use. Moisture can damage the generator and can lead to an electric shock.
- When storing gasoline or equipment with fuel in tank: store away from furnaces, stoves, water heaters or other appliances that have a pilot light or other ignition source because they can ignite gasoline vapors.
- Generators vibrate in normal use. During and after the use of the generator, inspect the generator as well as extension cords and power supply cords connected to it for damage resulting from vibration. Have damaged items repaired or replaced as necessary. Do not use plugs or cords that show signs of damage such as broken or cracked insulation or damaged blades.
- If you start to feel sick, dizzy, or weak after the generator has been running, move to fresh air RIGHT AWAY. See a doctor. You could have carbon monoxide poisoning.



## **Warning:**

1. Caution! Exhaust gases are toxic. Do not operate the generator in a room without a ventilation system!
2. Children must be protected by keeping them at a safe distance from the generator!
3. Generator filling is not permitted during operation!
4. If the generator is installed in a closed room, follow the fire and explosion safety regulations!
5. Do not connect to the home circuit!
6. Do not use in a damp environment!
7. Keep flammable materials away!
8. When refuelling:
  - a. Stop the engine;
  - b. Do not smoking;
  - c. Do not spill.



## **General Safety Instructions**

- The operator must be familiar with the operating principles and structure of the generator and engine, know how to stop the engine in an emergency and how to handle its parts.
- Never allow children using this appliance.
- Never allow people who digest these instructions to use this appliance. Local regulations may impose a restriction on the age of the user.
- Do not use this appliance when people, especially children, or companion animals are nearby. Keep them far from the work area.
- The operator or user is liable for accidents or possible damage to other persons and property of others.
- Use safety equipment. Wear protective clothing such as a dust mask, non-slip safety shoes, and a helmet and hearing protection.
- Stay alert, watch what you are doing and use common sense when using the generator.
- Do not use when you are tired or under the influence of drugs, alcohol or medication.
- Install the generator in a well-ventilated area, keeping at least 1.5 meters between the generator and the building walls or other equipment. Keep away from the generator any flammable liquid or flammable material.
- Do not run the generator in an enclosed or poorly ventilated area. The gases discharged by the engine contain carbon monoxide, which is toxic and can lead to loss of consciousness or even death.
- Run the generator in accordance with the rating given in the operating instructions. Avoid operating the generator under an overload or at excessive speed.
- The exhaust silencer of the generator becomes extremely hot when the engine is running or even for some time after it has stopped. Do not touch it to avoid burns.
- Do not carry or store the generator until it has cooled down completely.
- Periodically perform maintenance and resolve any problems that may have occurred. Do not run the generator before correcting the fault.
- The generator uses an air cooling system, and it is necessary to regularly clean its components such as grilles, fan cover and fan to ensure cooling.
- Keep the fuel filter clean, change the engine oil periodically.
- Carefully check the installation, connections and clamping condition of the fasteners, tighten if necessary.
- Periodically clean the air filter components renew the air filter if necessary.
- Switch off all connected electrical appliances before starting or stopping the generator

motor.

- Before transporting the generator, the fuel tank must be emptied.
- Maintenance and repairs of the generator set must be carried out by a qualified technician at an authorized service center.
- The accessible surfaces may be hot when operation. Avoid coming in contact with them. Always use gloves when handle the tool.
- Protect children by keeping them at a safe distance from the generating set.
- Fuel is combustible and easily ignited. Do not refuel during operation. Do not refuel while smoking or near naked flames. Do not spill fuel.
- Some parts of the internal combustion engine are hot and may cause burns. Pay attention to the warnings on the generating set.
- Engine exhaust gases are toxic. Do not operate the generating set in unventilated rooms.
- Before use, the generating set and its electrical equipment (including lines and plug connections) should be checked to ensure that they are not defective.
- The generating set shall not be connected to other power sources, such as the power company supply mains.
- Warning: when starting your generator using the cord, be careful of the sudden changes in engine rotation.
- Risk of injury! Never cover the generator when it is operating.
- The circuit-breaker mounted on the generating set is intended to eliminate the risk of electric shock. If it is to be replaced by a new circuit breaker, it must correspond to the technical specifications of the generator.
- Due to high mechanical stresses, a flexible cable with a strong rubber shield (according to IEC 245-4) or a similar cord must be used.
- The use shall conform to regulations of electrical safety applicable to the place where the generating sets are used.
- Maintenance and repair of the generator must be carried out by a qualified technician from an authorized after-sales service center.
- The generator must not be altered or modified. Any intervention must be done by an authorized after-sales service center.
- Installation and major repair work shall be carried out only by specifically trained personnel
- The user must respect the requirements and precautions in the case of resupply by generating sets of an installation, depending on existing protective measures in this installation and applicable regulations.
- Generating sets should only be loaded up to their rated power under the rated ambient conditions.
- Prior to commencing maintenance work it shall be ensured that untimely start-up is not possible.

### **Safety instructions for fuel filling**

- Fuel is extremely flammable and harmful.
- This generator uses only gasoline, any other fuel that the gasoline deteriorates the engine.
- Do not fill the tank with too much gasoline to prevent overfilling. When a spill is found, wipe dry with a dry cloth before starting the engine.
- If you have mistakenly swallowed fuel, inhaled fuel vapors or drops of fuel into your eyes, you should immediately see the doctor. If a certain amount of fuel was spilled on your skin or clothing, you would need to wash and change clothes.
- Always switch off the generator motor when refueling.
- Never refuel with or near a flame.

- Be careful not to spill fuel on the engine and exhaust grid of the generator when filling fuel.
- Store fuel in a suitable, clean container away from sources of fire.
- Fill fuel in a safe place; slowly open the fuel cap to release the pressure inside the fuel tank. Wipe the spilled fuel drops before starting the engine.
- To prevent fire, move the generator to a minimum distance of 4 meters from the fuel filler area.
- Check that the fuel tank plug is tight before starting.
- Do not store gasoline in the tank for an extended period of time.
- When using or transporting the generator, be sure to hold the generator upright, otherwise the fuel may leak from the carburetor or fuel tank.

### **Electrical Safety**

Check before each use that the load to be connected does not exceed the power output of the generator.

To avoid electric shock, follow the instructions below:

- Do not touch the generator with wet hands.
- Do not run the generator in rain or snow.
- Do not run the generator near water.
- Connect the generator to the earth. Use a sufficiently large lead wire as a grounding wire.
- Do not put the generator in parallel operation with another generator.
- When using extension cords, ensure that they are of a diameter large enough to carry current and that they are used correctly.

The connections of a generating set, used as an auxiliary power supply, to the electrical installation of a building must be carried out by a qualified electrician and in accordance with the provisions of all applicable laws and standards in the electrical field. Incorrect connections will cause the electric current flowing out of the generator to flow back into the lines of the utility company. Such reflux can electrocute workers in the public power company working on the network or other persons in contact with the line during a power outage; in addition, when the public power supply has recovered, the generator may explode burn or generate fire in the building's electrical system.

Before connecting the electrical appliances to the generator, check that their voltage and frequency specifications correspond to the technical characteristics of the generator. Damage could occur if the connected device is not designed to operate with a +/- 10% voltage tolerance or +/- 3% frequency tolerance from the generator set.

### **Environmental Protection**

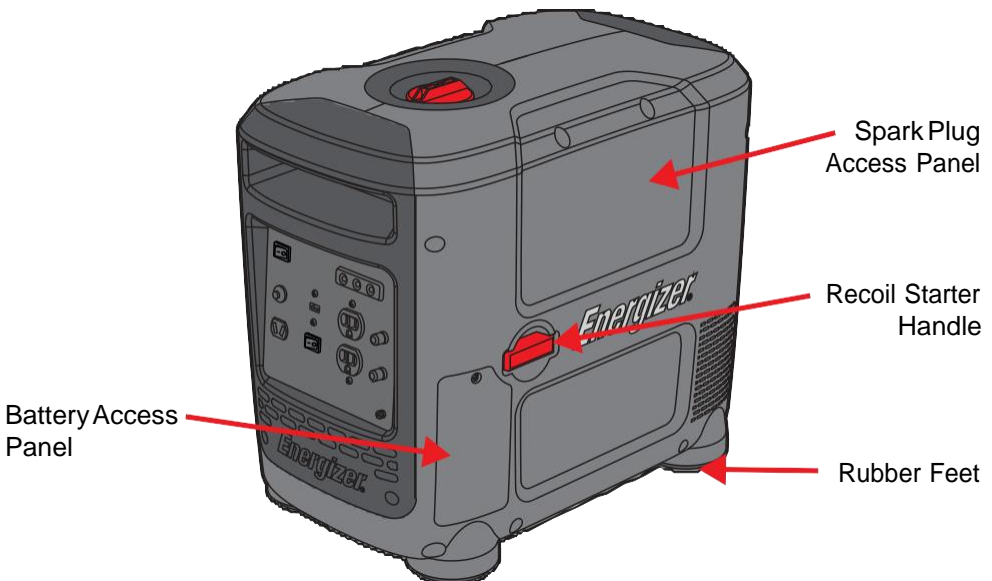
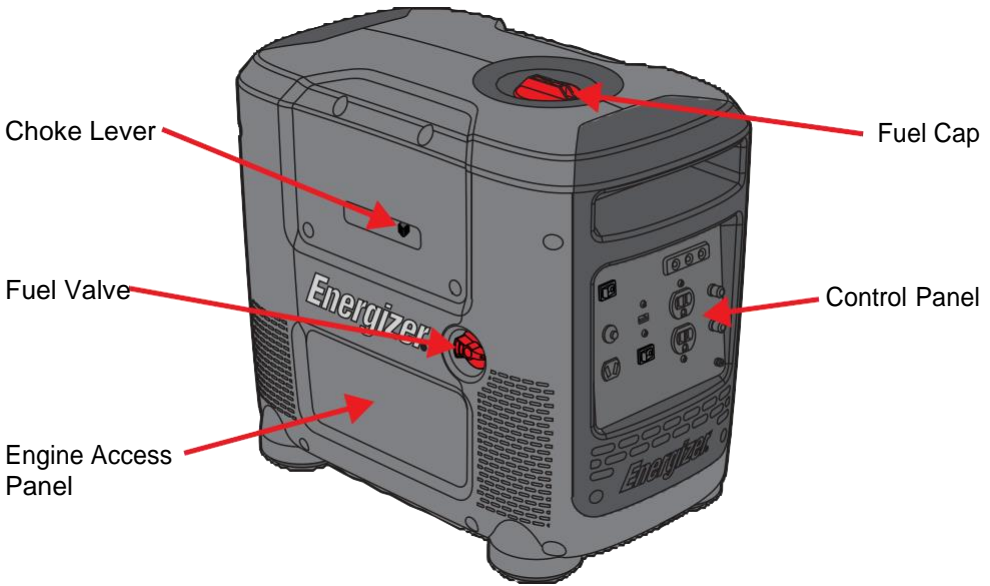
- The exhaust silencer must be checked periodically (Before starting, turn off the generator and allow it to cool completely). A damaged exhaust silencer causes an increase in noise.

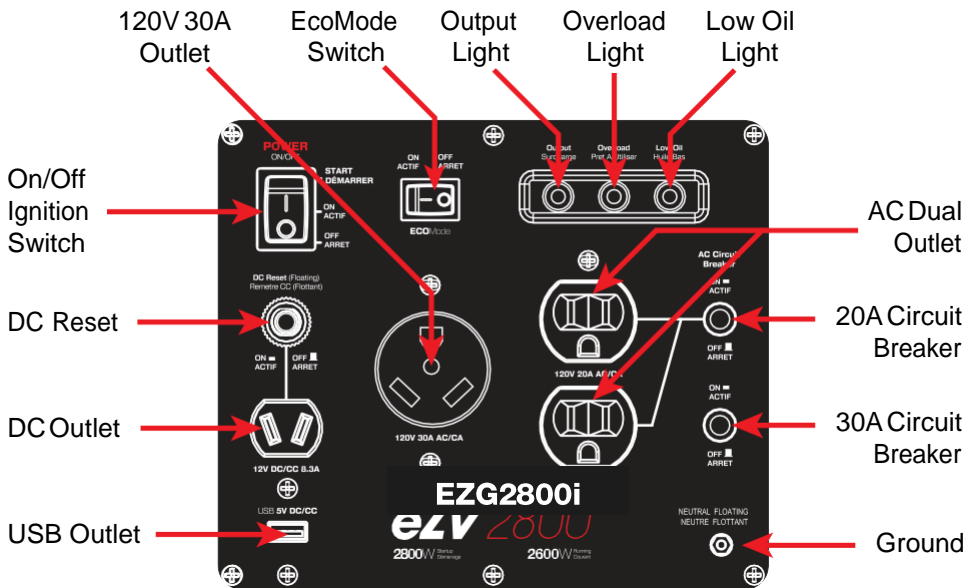
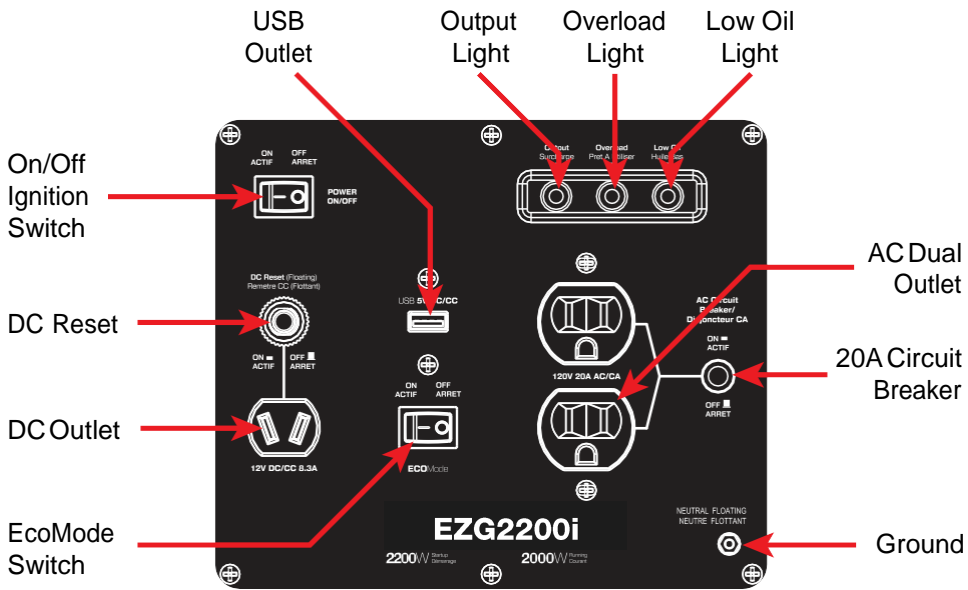
- Do not throw motor oil into the sewers, but place it in a collection point provided for this purpose.
- The fuel in this machine is combustible and deflagrates. After the machine has been switched off, the fuel must be treated properly and the local environmental requirements must be met.

## Chapter 2 — Learn About Your Generator

This section will show you how to identify key parts of your generator. Going over the terminology below will make sure we're on the same page.

### 2.1 Identification of Components





## 2.2 Make Sure You Have Everything

<b>Part Name</b>	<b>Quantity</b>
EZG series Generator	1
User Guide	1
DC Charging Cables	1
450mL 10W30 Oil with Funnel	1
Tool Kit	1

Make sure your generator set has everything in the table above.

## Chapter 3 — Setting Up your EZG series Generator

Setup should be done every time you start up your generator, these quick checks will ensure you get the most out of your generator.

**Exhaust gas contains poisonous carbon monoxide. Never run the generator in an enclosed area. Be sure to provide adequate ventilation. Operate the generator on a level surface. If the generator is tilted, fuel spillage may result. Keep away from moving parts while the generator is running. The generator is air-cooled and may be damaged if ventilation is inadequate.**

### 3.1 Checking the Engine Oil Level

1. Ensure the generator is on a level surface.
2. Inspect engine oil:
3. Take out the oil filler cap and clean the dipstick.
4. Check the oil level by reinserting the oil filler cap without rotating it. Remove the oil filler cap and examine the oil level. If the oil level is at or below the minimum oil level, refill the oil to the maximum oil level mark.
5. Reinsert the oil filler cap and tighten securely.



**Engine oil is a major factor affecting engine performance and service life. Non-detergent or vegetable oils are not recommended.**



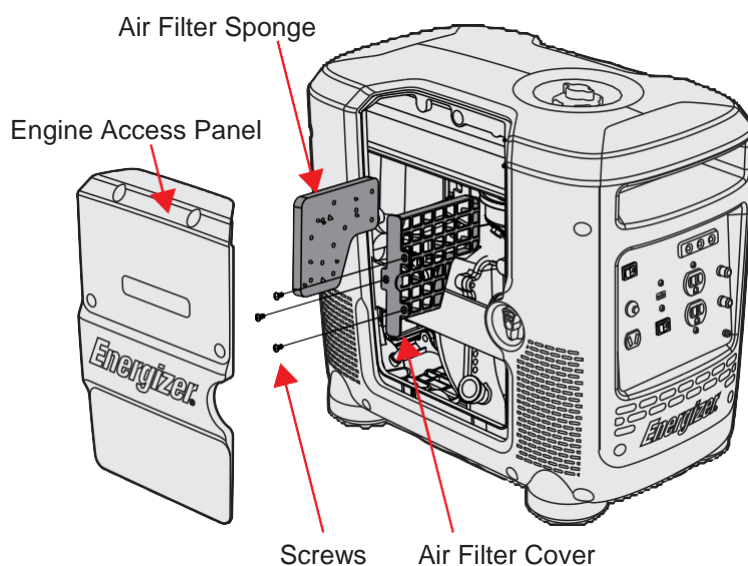
**Gasoline substitutes are not recommended. They may be harmful to the fuel system components.**

**Gasoline is highly flammable and explosive under certain conditions. Refuel in a well-ventilated area with the engine stopped. Do not smoke or allow open flames or sparks in the area where the generator is being refueled or where gasoline is stored. Do not overfill the tank. Be careful not to spill fuel when refueling. Wipe up any spilled gasoline and let the area dry before starting the engine.**

### 3.2 Check the Air Filter

1. Unscrew and remove the engine access panel. Remove the air filter element and observe for cleanliness.
2. Clean the air filter element with soap and water or solvent. Squeeze dry and then soak in clean engine oil.
3. Squeeze out all excess oil and reinstall. Replace the filter if it is damaged.

**Check the air filter using the maintenance schedule. Always inspect air filter before using the generator. Clean Air Filter every 3 months or after 50hrs of operation according to Section 5.3 Cleaning the Air Filter.**



## Chapter 4 — Using Your EZG series Generator

### **DANGER - CARBON MONOXIDE**

#### **Using a generator indoors WILL KILL YOU IN MINUTES.**

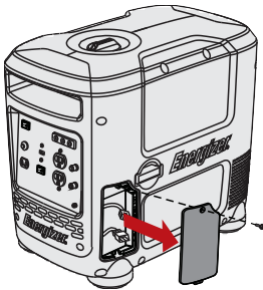
- **Generator exhaust contains carbon monoxide (CO). This is a poison you cannot see or smell. If you can smell the generator exhaust, you are breathing CO. But even if you cannot smell the exhaust, you could be breathing CO.**
- **NEVER use a generator inside homes, garages, crawlspaces, or other partly enclosed areas. Deadly levels of carbon monoxide can build up in these areas. Using a fan or opening windows and doors does NOT supply enough fresh air.**
- **ONLY use a generator outside and far away from windows, doors, and vents. These openings can pull in generator exhaust.**
- **Even when you use a generator correctly, CO may leak into the home. ALWAYS use a battery-powered or battery-backup CO alarm in the home.**
- **If you start to feel sick, dizzy, or weak after the generator has been running, move to fresh air RIGHT AWAY and seek medical attention. You could have carbon monoxide poisoning.**

**Before using generator, a ground wire must be connected to the ground terminal. The Ground terminal is located on the Front Panel. Before using the ground terminal consult a qualified electrician.**

## 4.1 Initial Setup of Your Generator

We know you're excited to get using your generator. Please be sure to follow the setup, operation, and shut off instructions below thoroughly to ensure the best lifespan for your generator.

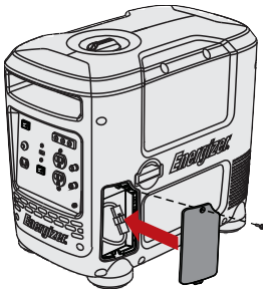
Steps 1-3 are for the EZG2800i. If you have an EZG2200i start on Step 4.



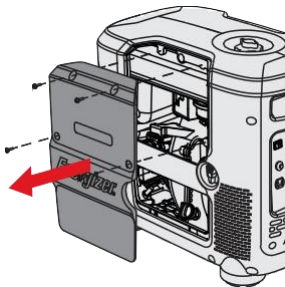
**1. Setup the Battery:** Remove the Battery Access Panel from the unit by unscrewing the screw at the top and releasing the panel.



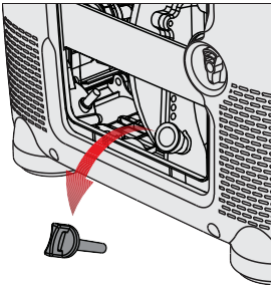
**2. Connect the Battery:** locate and connect the loose connectors from the battery wiring harness and the main wiring harness. The battery is now connected to the unit.



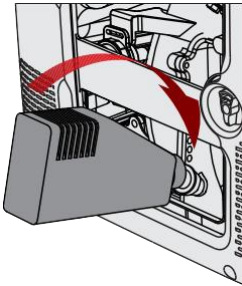
**3. Re-install the Battery Access Panel** onto the unit. Ensure the screw is fastened properly.



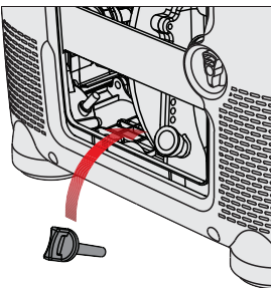
**4. Remove the main engine access panel** from the unit by unscrewing the (4) screws at the top and middle of the unit.



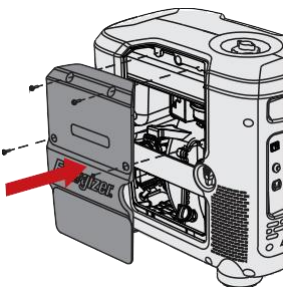
**5.** Locate, unscrew, and remove the Oil Dipstick, exposing the internal engine compartment. Be sure not to allow any dust or debris near the engine during this time.



**6.** Pour in the full contents of the 450 mL oil bottle provided with your unit, or fill to the full mark located on the dipstick.



**7.** Re-install the Oil Dipstick and fasten tightly. Wipe away any excess oil. For best results, drain and refill the engine oil after the first 20 hrs of use, and every 50 hrs thereafter. Do not remove the Oil Dipstick when the engine is warm from prior use.



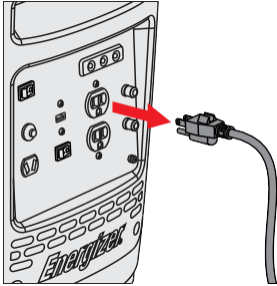
**8.** Re-install the Engine Access Panel onto the unit, ensuring that all (4) screws are fastened properly.



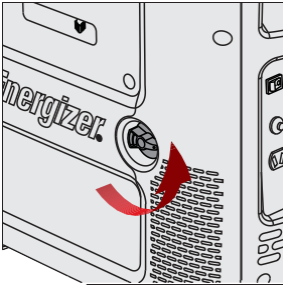
**9.** Remove the fuel cap, exposing the fuel tank . Be sure not to allow any dust or debris near the engine during this time. Pour 91 octane unleaded gasoline into fuel tank, add Ethanol Shield™ to fuel tank as directed on bottle, and replace the fuel cap.

## 4.2 Operating Your Generator - Manual Start

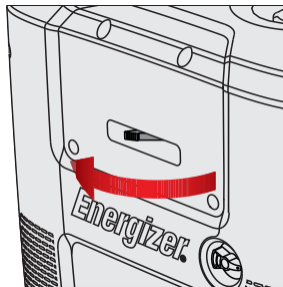
All EZG generators can be started using the manual starting method. EZG models that include batteries can also be started using the convenient electric start method on page 21, these models also include an automatic choke.



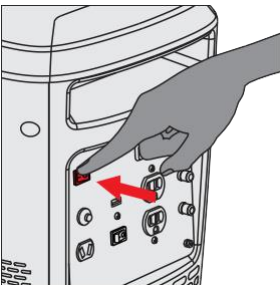
1. Disconnect all devices from the generator.



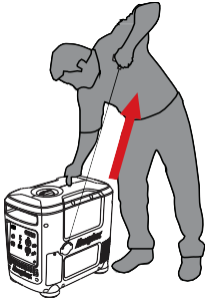
2. Open the fuel valve: turn the fuel valve from "off" to "on". Make sure the valve is turned all the way on.



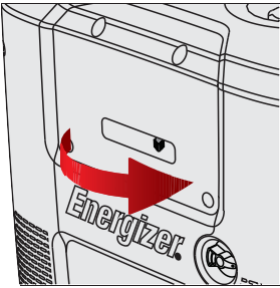
3. Turn choke to fully "Closed" position. Leave the choke in the "Open" position if the generator is still warm from recent use, or if the air temperature is higher than 50°F (10°C).



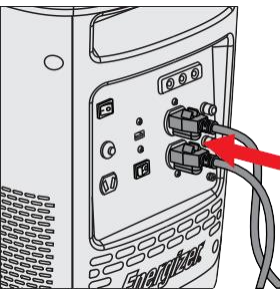
4. Turn Power switch to "On". Make sure EcoMode switch is set to "Off".



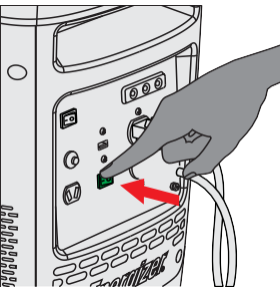
**5.** Pull Recoil handle until engine starts. Several pulls may be required until engine starts. Do not release the pull cord at the end of a pull, this will damage the recoil assembly. Bring the pull handle back down to the unit by hand.



**6.** Once the generator has started, wait at least 30 seconds for it to warm up, and then you may slowly open the choke lever until it is fully open.



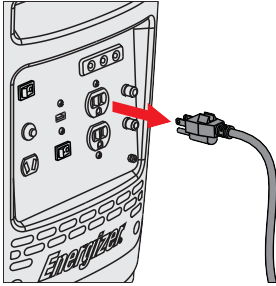
**7.** Connect all of your devices to the generator.



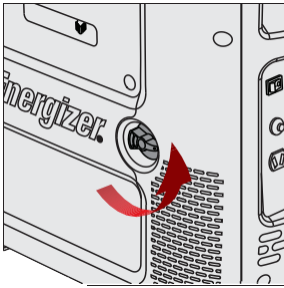
**8.** Turn EcoMode switch to "On". This will reduce the output to a level where the generator will only produce enough power for the connected devices. The reduction of extra, unused power saves fuel.

## Operating Your Generator - Electric Start

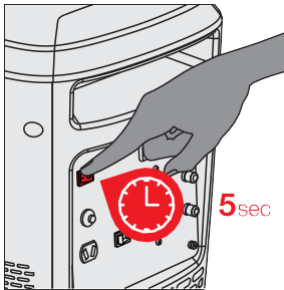
Only the EZG2800 is equipped with a battery, and can follow these instructions. It also has an automatic choke.



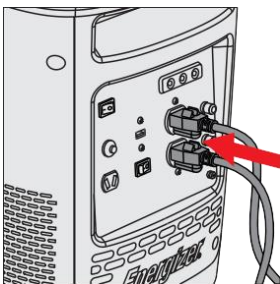
1. Disconnect all devices from the generator.



2. Open the fuel valve: turn the fuel valve from "off" to "on". Make sure the valve is turned all the way on.

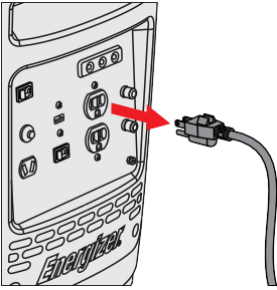


3. Turn Power switch to "Start" for 5 seconds to start engine. If the engine does not start, the battery may be dead, follow manual start instructions to start the engine. Running the engine charges the battery.

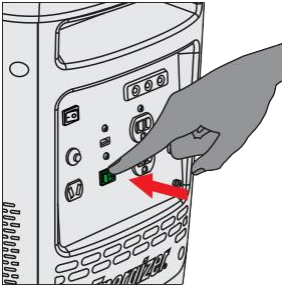


4. Connect all of your devices to the generator and turn EcoMode switch to "On". This will reduce the output to a level where the generator will only produce enough power for the connected devices. The reduction of extra, unused power saves fuel.

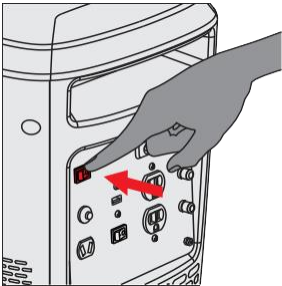
## 4.3 Shutting Off Your Generator



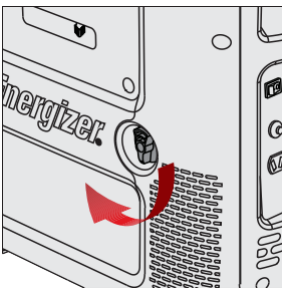
1. Disconnect all devices from the generator.



2. Turn EcoMode switch to "Off". Let generator run with EcoMode off for 2 minutes.



3. Turn Power switch to "Off".



4. Close the fuel valve by turning it to "Off".

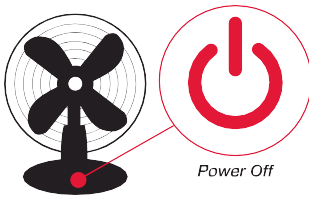
**To stop the engine in an emergency, turn the engine switch "OFF". Always connect the ground terminal at the front panel to the ground (earth) to prevent electrical shock.**



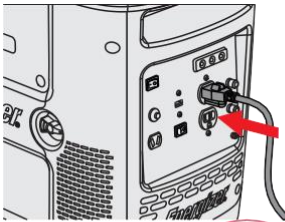
## 4.4 Using an EZG series generator with your Devices

After starting your generator you can connect your devices to it. Before starting, make sure that you know what you are able to power with your Generator. Here's how you can find out: Add the watt ratings of all the loads that the generator set will be powering at the same time. Make sure that total wattage will not exceed the generator rating.

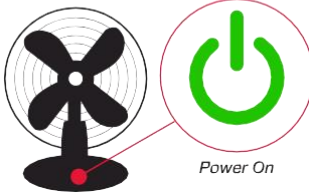
For example: A generator set rated 5000W can power two 1500W heaters, a 900W circular saw, a 500W drill and a 100W light at the same time (4500W combined). However, to operate a second 900W saw, it will be necessary to disconnect one of the 1500W heaters.



1. Turn off all devices before connecting them to your generator.



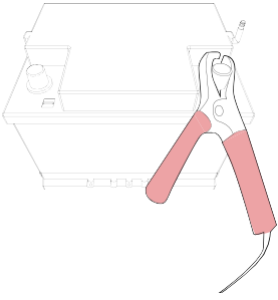
2. Insert the plug of the device into your generator based on its voltage requirements. Your EZG series generator includes two 120V AC outlets, one 5V USB outlet, and one 12V DC outlet for charging automotive batteries. See Section 4.5 before using the DC outlet.



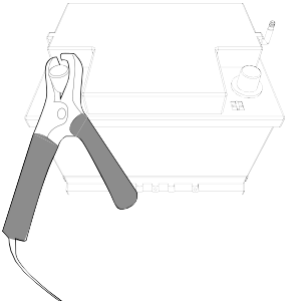
3. You can now turn your devices on and use them.

## 4.5 Using an EZG series generator to Charge Automotive Batteries

**You can use 12V 8.3A DC output to charge automotive batteries. Be sure to monitor the battery charge time. Overcharging may cause explosion, injury, and damage to the generator.**

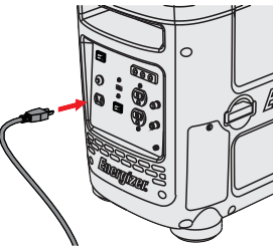


1. Connect the positive (red) terminal of the battery to the red (positive) terminal, the 12V 8.3A DC Output Terminal on the front panel of your generator.



2. Connect the negative (black) terminal of the battery to the black (negative) terminal, the 12V 8.3A DC output terminal on the front panel of your generator.

**Do not reverse the polarity of these connections.**



3. Insert the DC plug into the DC receptacle. The generator should be running, and with EcoMode off. After insertion EcoMode may be turned on.

**An explosive hydrogen gas is discharged through vent holes in the battery during charging. Do not allow sparks or open flames around the generator or battery during the charging process.**

**Electrolyte fluid can burn eyes and clothing. Be extremely careful to avoid any contact. If injured, wash the affected area immediately with large amounts of water and seek medical attention immediately.**

**When charging a large capacity battery or totally discharged battery, excessive current may force the DC breaker to turn off. In this case, use a battery charger.**

## Chapter 5 — Maintaining Your EZG series Generator

Proper maintenance ensures safe, economical and trouble-free operation. Improper maintenance may cause the generator to malfunction and can lead to serious injuries. Contact Customer Support if you have any maintenance questions.

### 5.1 Maintenance Schedule

Item	Task	Daily	Every 20 Hours	Every 50 Hours	Every 100 Hours	Every 300 Hours
Generator	General Inspection	•				
Engine Lubricants	Inspect Oil Level	•				
	Replace		•*		•	
Air Filter	Inspection	•				
	Cleaning			•		
Sediment Cup	Cleaning			•		
Spark Arrester	Cleaning				•	
Spark Plug	Inspection & Cleaning				•	
	Replacement					•
Valve Clearance	Inspection & Adjusting					•
Combustion Chamber	Inspection & Adjusting					•
Fuel Tank and Strainer	Cleaning					•
Fuel Line	Cleaning	Every two months (replace if necessary)				
Exposed Metal Parts	Lubricate with oil	After every use and especially before storage				

\* For first use of the generator.

## 5.2 General Inspection Tips

1. Look for fuel leaks around the fuel tank, fuel hose, and fuel valve. Close the fuel valve and repair leaks immediately.
2. Look and listen for exhaust leaks while the engine is running. Have all the leaks repaired before continuing operation.
3. Check for dirt and debris and clean as necessary .
4. Check the engine oil level and add oil as necessary.

**Do not use gasoline or low flash point solvents for cleaning. They are flammable and could explode under certain conditions.**

## 5.3 Cleaning The Air-Filter

**Using gasoline or other flammable solvents can cause a fire or explosion. Do not operate this product without an air filter.**

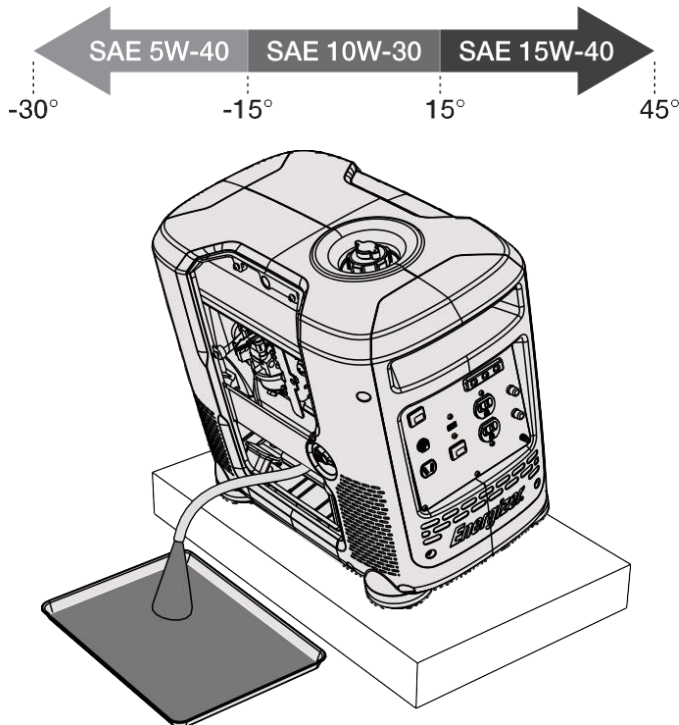
1. Unscrew and remove the engine access panel.
2. Unscrew and remove the air filter assembly.
3. Remove the foam filter.
4. If the foam element is dirty, clean it in warm soapy water, rinse, and allow it to dry thoroughly, or clean in non-flammable solvent and allow to dry.
5. Dip the foam element in clean engine oil, then squeeze out all excess oil. The engine will smoke when started if too much oil is left in the filter.
6. Wipe dirt from the air filter unit and cover using a moist rag.

## 5.4 - Changing the Engine Oil

**Used motor oil can cause skin irritations if left in long-term contact with skin. Wash hands thoroughly with soap and water after handling oil.**

**Do not dispose of used oil in drains or soil. Local service shops provide environmentally-friendly disposal methods.**

1. Stop the engine and remove the oil access panel.
2. Place a pan beside the generator.
3. Remove the oil drain screw and, using the oil drainage spout (found in your tool kit) allow the oil to completely drain into the pan.
4. Reinstall drain screw before filling the engine with fresh oil. Do not overfill oil reservoir. Use a funnel to prevent spillage. See chart below for recommended oil.
5. Reinstall the oil filler cap and tightly fasten.



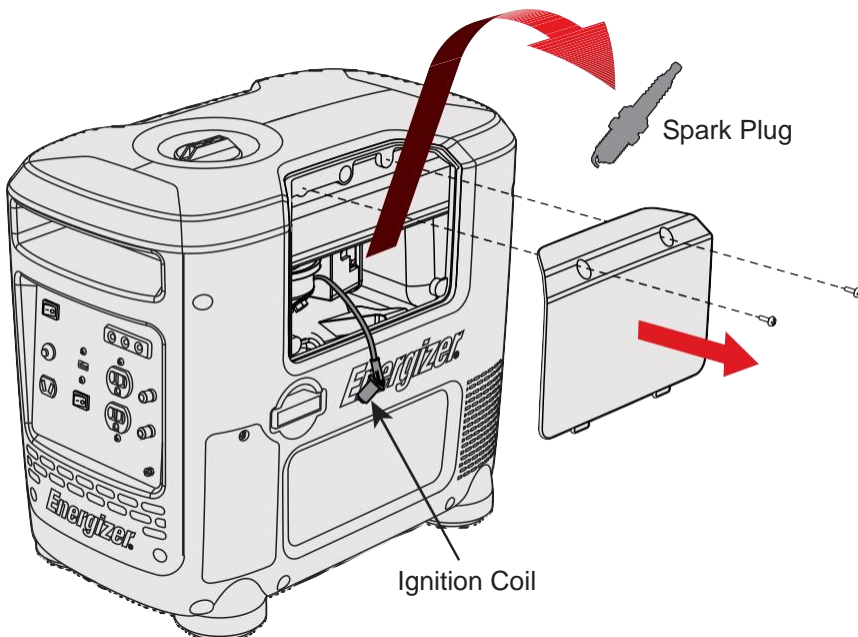
## 5.5 - Replacing and Cleaning the Spark Plug

**Do not rinse spark plug in water. Follow guidelines and be careful not to overtighten the spark plug.**

**Tighten  $\frac{1}{2}$  turn when installing a new spark plug.**

**Tighten  $\frac{1}{4}$  turn when re-installing an old spark plug.**

1. Unscrew and remove spark plug access panel and screws.
2. Remove ignition coil from spark plug and remove spark plug with spark plug wrench.
3. Inspect the spark plug and clean any dirt from the electrodes with a wire brush. If electrodes are worn or show signs of wear, replace spark plug.
4. Measure the electrode gap with a spark plug gauge and adjust as necessary by bending the side electrodes. Ensure that the gap is between 0.7 and 0.9mm
5. Reinsert the plug carefully. Tighten with a spark plug wrench.



## 5.6 - Handling and Storage

### Handling

1. Turn off the power switch and the fuel valve when transporting the generator set.
2. Do not touch engine until the engine has cooled down.
3. Keep the generator at a level position in order to prevent spillage.

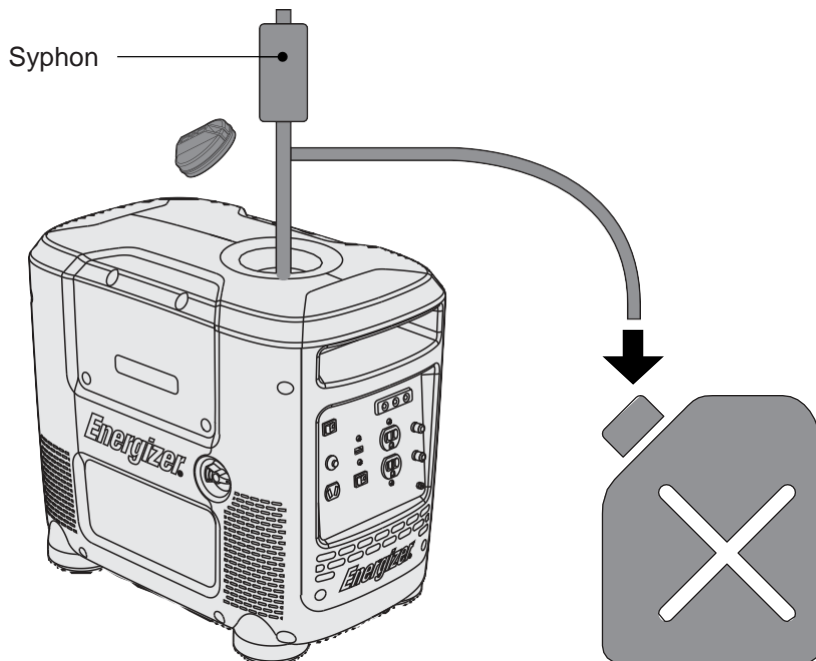
### Storage

Before storing the generator set for an extended period:

1. Ensure that the storage area is free of excess humidity and dust.
2. Drain the fuel tank and the carburetor.
3. To prevent corrosion, coat screws and exposed metal with antirust oil at least twice per year.

### Draining the Fuel Tank

1. Turn OFF the engine. Remove the fuel cap 1. Turn OFF the engine. Remove the fuel cap and the debris screen underneath the fuel cap.
2. Empty the fuel tank into an approved gasoline container using a siphon.



## 6.0 Troubleshooting

Common issues can be fixed by following the instructions in this guide. If the unit will not function after following these instructions, contact technical support before attempting to use or repair the product.

PROBLEM	SYMPTOMS	CORRECTION
Generator will not start	Generator will not start	<ol style="list-style-type: none"> <li>1. The power switch is in the “Off” position. Switch to “On.”</li> <li>2. The engine is out of gasoline, add more.</li> <li>3. Engine choke is in wrong position. Adjust choke lever according to instructions on page 19.</li> <li>4. Faulty spark plug, replace with equal or greater quality plug. Refer to page 33 in your user’s manual for a complete list of spark plug compatibility codes.</li> <li>5. Insufficient oil, add more oil.</li> <li>6. Clogged fuel line, inspect gas tank for debris.</li> </ol>
	High resistance when pulling recoil starter.	<ol style="list-style-type: none"> <li>1. The engine does not have enough oil - add oil.</li> <li>2. Air filter element obstructed by debris. Clean according to user manual instructions on page 26.</li> </ol>
Difficulty starting	Engine requires many attempts to start	<ol style="list-style-type: none"> <li>1. Disconnect load before starting.</li> <li>2. Incorrect oil being used. Please refer to the oil usage chart on page 27 in your user’s manual.</li> <li>3. Faulty spark plug, replace with equal or greater quality plug. Refer to page 33 in your user’s manual for a complete list of spark plug compatibility codes.</li> </ol>



Thick smoke released from exhaust	Exhaust fumes thick and dark	<ol style="list-style-type: none"> <li>1. Adjust choke lever according to user manual instructions on page 19.</li> <li>2. Incorrect oil being used. Use oil according to oil usage chart in user manual on page 27.</li> <li>3. Air filter element obstructed by debris. Clean according to user manual instructions on page 26.</li> </ol>
Generator does not produce power	No indicator lights or display on front panel	<ol style="list-style-type: none"> <li>1. Generator circuit breaker off or tripped</li> <li>2. Remove all loads, reset breaker, and check device for defects. Do not exceed generator rating.</li> </ol>
Generator does not produce power (cont.)	Overload indicator light keeps flashing	<ol style="list-style-type: none"> <li>1. Adjust choke lever according to instructions on page 19.</li> <li>2. *When a connected device draws high startup power the overload and output indicator light may briefly illuminate, but this is to be expected. Once the device starts up the overload indicator light will shut off and the output light will remain green.</li> <li>3. Ensure device wattage consumption does not exceed the generator's maximum peak output.</li> </ol>
	No DC output	<ol style="list-style-type: none"> <li>1. Disconnect battery, reset breaker and test the battery for shorts.</li> <li>2. Clean battery connector nodes.</li> </ol>
Generator outputs unstable power	Connected device does not operate consistently	<ol style="list-style-type: none"> <li>1. Verify device start up requirements (Wattage consumption). Do not exceed the generators maximum peak output.</li> </ol>

	Device will not start up	<ol style="list-style-type: none"> <li>1. Remove all loads, reset breaker, and check device for defects. Do not exceed generator rating.</li> <li>2. Ensure device's wattage consumption does not exceed the generator's maximum peak output.</li> </ol>
	Engine idle unusually high or low	<ol style="list-style-type: none"> <li>1. Carburetor in need of tuning. For details on how to adjust correctly please contact your local service centre or contact Builder SAS</li> </ol>
Generator overheats	Operation is normal when generator is cool, overheating occurs within moments of start up.	<ol style="list-style-type: none"> <li>1. Atmospheric temperature high (excess of 35°C).</li> <li>2. Insufficient air circulation in vicinity of generator.</li> <li>3. Low oil viscosity. Use oil according to oil usage chart in user manual on page 27.</li> <li>4. Fouled spark plug, replace with equal or greater quality plug.</li> </ol>
Engine idle fluctuates		<ol style="list-style-type: none"> <li>1. Carburetor in need of tuning. For details on how to adjust correctly please contact your local service centre or contact Builder SAS. Missing ground reference on return side of differential analog output (external).</li> <li>2. Air filter element obstructed by debris. Clean according to user manual instructions on page 26</li> </ol>

Engine stops	Engine idles down and shuts off	<ol style="list-style-type: none"> <li>1. The power switch is in the "Off" position.</li> <li>2. The engine is out of gasoline. Add regular unleaded gasoline.</li> <li>3. Air filter element obstructed by debris. Clean according to user manual instructions on page 26</li> <li>4. Adjust choke lever according to user manual instructions on page 20.</li> <li>5. Incorrect oil being used or insufficient oil level. Always ensure high oil levels, and use oil according to oil usage chart in user manual on page 27.</li> <li>6. Fouled spark plug, replace with equal or greater quality plug. Refer below for a complete list of spark plug compatibility codes.</li> </ol>
--------------	---------------------------------	---

### SPARK PLUG COMPATIBILITY

BRAND	EZG SERIES
NGK	CR7HS
DENSO	U20FPR
CHAMPION	RZ10YC
BOSCH	U24BC

# Chapter 7- Specifications

## EZG2800i

<b>GENERATOR</b>	Rated frequency (Hz)	50
	Rated AC Output Power (kW)	COP 2.6
	Max AC Output Power (kW)	MAX 2.8
	Rated DC Voltage (V)	12
	Power Factor	1.0
	Performance class	G1
	Class quality	A
<b>ENGINE</b>	Type	5.3 HP, Single Cylinder, forced air cooling, 4-stroke, OHV
	Displacement (cm <sup>3</sup> or cc)	149
	Ignition mode	Transistor Controlled Ignition
	Starting mode	Electric and Recoil Start
	Max. Output (rpm)	5000
	Fuel tank capacity (Gal/Litres)	1.85 / 7.0
	Oil capacity	450mL (15W40)
	Fuel Type	91 Oct. Unleaded Gasoline
	Guarantee sound power level LWA dB	92
	Measured sound power level	91,12dB(A) K=0.89dB(A)
	Sound pressure level	71,12 dB(A) K= 3dB(a)
<b>BATTERY</b>	Battery	12V 5Ah
	Nominal Voltage	12V
<b>SIZE</b>	Packaging/Product Dimensions L x W x H (mm)	545x340x495
	Packaging/Product Weight (kg)	33

	Altitude	1000m
	Degree of protection	IP23M

# Energizer®


## Inverter Generator

### Groupe électrogène inverter Basse Tension


### EZG2800I

Engine Family Name Nom du moteur	XG-157F
Engine Displacement Cylindrée du moteur	150cc
Exhaust Emission Control Contrôle d'échappement du moteur	EM
Emission Compliance Period Période de conformité d'échappement	125 h
Lubricant Requirement Critères du lubrifiant	10W-30

RV FRIENDLY  
RV CONVMIAL




AUTOMATIC  
CHOKE




ÉTRANGLEUR  
AUTOMATIQUE

USB  
CHARGING




RECHARGE  
PAR USB

ELECTRIC  
START




DÉMARRAGE  
ÉLECTRIQUE

2 YEAR  
WARRANTY



GARANTIE  
DE 2 ANS

FUEL SAVING  
ECO THROTTLE





ACCELERATEUR  
ECO

AC Voltage / Voltage CA	Frequency / Fréquence	230V ~ 50Hz	Rated AC output / Courant nominal AC	13.5A
Power Output (cop) / Energie		2,6kW	Engine RPM / tr/min du moteur	4000 - 5000 /min
Max. AC Output / Production maximale CA		28 kW (s2-9m)	Power factor / Facteur de puissance	1.0
DC Voltage/Ampere / DC Voltage/Ampléage		12V/8.3A	Max. altitude / Altitude maximale	1000m
Max. Ambient Temperature / Temperature Ambiente Max.		40°C	Quality class / Classe de qualité	B
Protection class / Classe de protection		IP23M	Performance class / Classe d'efficacité	G1
Net weight/Poids net		33 kg		

Serial Number and Manufacturer Date Label

IMPORTER :  
BUILDER, 32, rue Aristide Bergès - ZI 31270 Cugnaux  
- France  
MADE IN P.R.C. 2018



Warning symbol



Read the instruction manual



Do not operate this tool in a closed room since the exhausted gas can cause injuries death.









Risk of being burn



Bystanders must be kept away




















Danger! electrical shock

	Carbon monoxide (CO) danger
	Fire hazard
	Risk of fire! do not bring any inflammable source
	Do not connect with an electrical supply
	Disposal symbol
	Guarantee noise emission



: Exhaust gas are dangerous, do not inhale them

Set nameplate

 <p><b>Inverter Generator</b> Groupe électrogène inverter Basse Tension <b>EZG2800I</b></p>	<p>RV FRIENDLY </p> <p>RV COMMVIAL </p> <p>AUTOMATIC CHOKE </p> <p>ÉTRANGLEUR AUTOMATIQUE </p> <p>USB CHARGING </p> <p>RECHARGE PAR USB </p>	<p>ELECTRIC START </p> <p>DÉMARRAGE ÉLECTRIQUE </p> <p>2 YEAR WARRANTY </p> <p>GARANTIE DE 2 ANS </p> <p>FUEL SAVING ECO THROTTLE </p> <p>ACCELERATEUR ÉCO </p>	<table border="1"> <tr> <td>AC Voltage / Fréquence</td> <td>230V ~ 50Hz</td> <td>Rated AC output / Courant nominal AC</td> <td>8.7A</td> </tr> <tr> <td>Power Output (com) / Énergie</td> <td>2.6 kW</td> <td>Engine RPM / tr/min du moteur</td> <td>5000/min</td> </tr> <tr> <td>Max. AC Output / Production maximale CA</td> <td>2.8 kW (625mm)</td> <td>Power factor / Facteur de puissance</td> <td>1.0</td> </tr> <tr> <td>DC Voltage/Ampere / DC Voltage/Ampérage</td> <td>12V/8.3A</td> <td>Max. altitude / Altitude maximale</td> <td>1000m</td> </tr> <tr> <td>Max. Ambient Temperature / Température Ambiante Max.</td> <td>40°C</td> <td>Quality class / Classe de qualité</td> <td>A</td> </tr> <tr> <td>Protection class / Classe de protection</td> <td>IP23M</td> <td>Performance class / Classe d'efficacité</td> <td>G1</td> </tr> <tr> <td>Net weight/Poids net</td> <td>33 kg</td> <td></td> <td></td> </tr> </table> <p style="text-align: center;">Serial Number and Manufacturer Date Label</p> <p>IMPORTER : BUILDER, 32, rue Aristide Bergès - ZI 31270 Cugnaux - France MADE IN P.R.C. 2018</p>    	AC Voltage / Fréquence	230V ~ 50Hz	Rated AC output / Courant nominal AC	8.7A	Power Output (com) / Énergie	2.6 kW	Engine RPM / tr/min du moteur	5000/min	Max. AC Output / Production maximale CA	2.8 kW (625mm)	Power factor / Facteur de puissance	1.0	DC Voltage/Ampere / DC Voltage/Ampérage	12V/8.3A	Max. altitude / Altitude maximale	1000m	Max. Ambient Temperature / Température Ambiante Max.	40°C	Quality class / Classe de qualité	A	Protection class / Classe de protection	IP23M	Performance class / Classe d'efficacité	G1	Net weight/Poids net	33 kg		
	AC Voltage / Fréquence	230V ~ 50Hz	Rated AC output / Courant nominal AC	8.7A																											
Power Output (com) / Énergie	2.6 kW	Engine RPM / tr/min du moteur	5000/min																												
Max. AC Output / Production maximale CA	2.8 kW (625mm)	Power factor / Facteur de puissance	1.0																												
DC Voltage/Ampere / DC Voltage/Ampérage	12V/8.3A	Max. altitude / Altitude maximale	1000m																												
Max. Ambient Temperature / Température Ambiante Max.	40°C	Quality class / Classe de qualité	A																												
Protection class / Classe de protection	IP23M	Performance class / Classe d'efficacité	G1																												
Net weight/Poids net	33 kg																														

## Hot Surface!

Keep clear of exhaust!



## Surface Chaude!

Rester loin de l'échappement!

Clean spark arrester every 100 hours of use. / Nettoyez le pare-étincelle à chaque 100 heures d'utilisation.

### ⚠ DANGER ⚠

Utiliser un générateur à l'intérieur VOUS TUERA EN QUELQUES MINUTES. L'échappement des générateurs contient du monoxyde de carbone. Un gaz toxique que vous ne pouvez ni voir ni sentir.



N'utilisez pas un générateur à l'intérieur d'une maison, ni dans un garage, MÊME si les fenêtres et les portes sont ouvertes.



N'utilisez un générateur qu'à l'EXTÉRIEUR et bien loin des fenêtres, portes et événements ouverts.

### ⚠ DANGER ⚠

Using a generator indoors can KILL YOU IN MINUTES. Generator exhaust contains carbon monoxide. This is poison that you cannot see or smell.



NEVER use inside a home or garage. EVEN if doors and windows are open.



Only use OUTSIDE and far away from windows, doors, and vents.

## ⚠ WARNING ⚠

Using a generator indoors can **KILL YOU IN MINUTES**. Generator exhaust contains carbon monoxide. This is poison that you cannot see or smell. **NEVER** use inside a home or garage. **EVEN** if doors and windows are open. **Only** use **OUTSIDE** and far away from windows, doors, and vents.



**Warning:** The Engine Exhaust from this product contains chemicals known to the State of California to cause cancer, birth defects or other reproductive harm.

**NEVER** add fuel to the generator when the engine is hot or running. **NEVER** allow fuel to come in contact with hot engine parts. **ALWAYS** allow engine to cool down before adding fuel. **KEEP GENERATOR AND STORED FUEL AWAY FROM FIRE, SPARKS AND CIGARETTES.**

Toxic Fumes Hazard, Running engines give off carbon monoxide, an odorless poisonous gas that can cause nausea, fainting, or death. Do not start or run engine indoors or in an enclosed area, even if windows and doors are open.



## ⚠ ATTENTION ⚠

Utiliser un générateur à l'intérieur **VOUS TUERA EN QUELQUES MINUTES**. L'échappement des générateurs contient du monoxyde de carbone (CO) un gaz toxique que vous ne pouvez ni voir ni sentir. **N'utilisez pas un générateur à l'intérieur d'une maison, ni dans un garage. MÊME** si les fenêtres et les portes sont ouvertes. **N'utilisez un générateur qu'à l'EXTÉRIEUR** et bien loin des fenêtres, portes et éventails ouverts.

**Attention:** L'échappement du moteur de ce produit contient des produits chimiques reconnus par l'État de Californie pour causer le cancer, des malformations congénitales ou d'autres problèmes de reproduction.

**NE JAMAIS** ajouter de carburant lorsque le moteur est chaud ou en marche. **NE JAMAIS** placer de carburant près des pièces chaudes du moteur. **Toujours** donner suffisamment de temps au moteur pour refroidir avant d'ajouter le carburant. **RANGER LE GÉNÉRATEUR ET LE CARBURANT ENBOUTEILLÉ BIEN LOIN DU FEU, DES ÉTINCELLES OU DES CIGARETTES.**

Fumées toxiques dangereuses – les moteurs en marche émettent du monoxyde de carbone, un gaz inodore et dangereux qui peut causer des nausées, des évanouissements voire la mort. Ne faites pas démarrer ou fonctionner un moteur à l'intérieur ou dans une aire fermée, même si les fenêtres et les portes sont ouvertes.

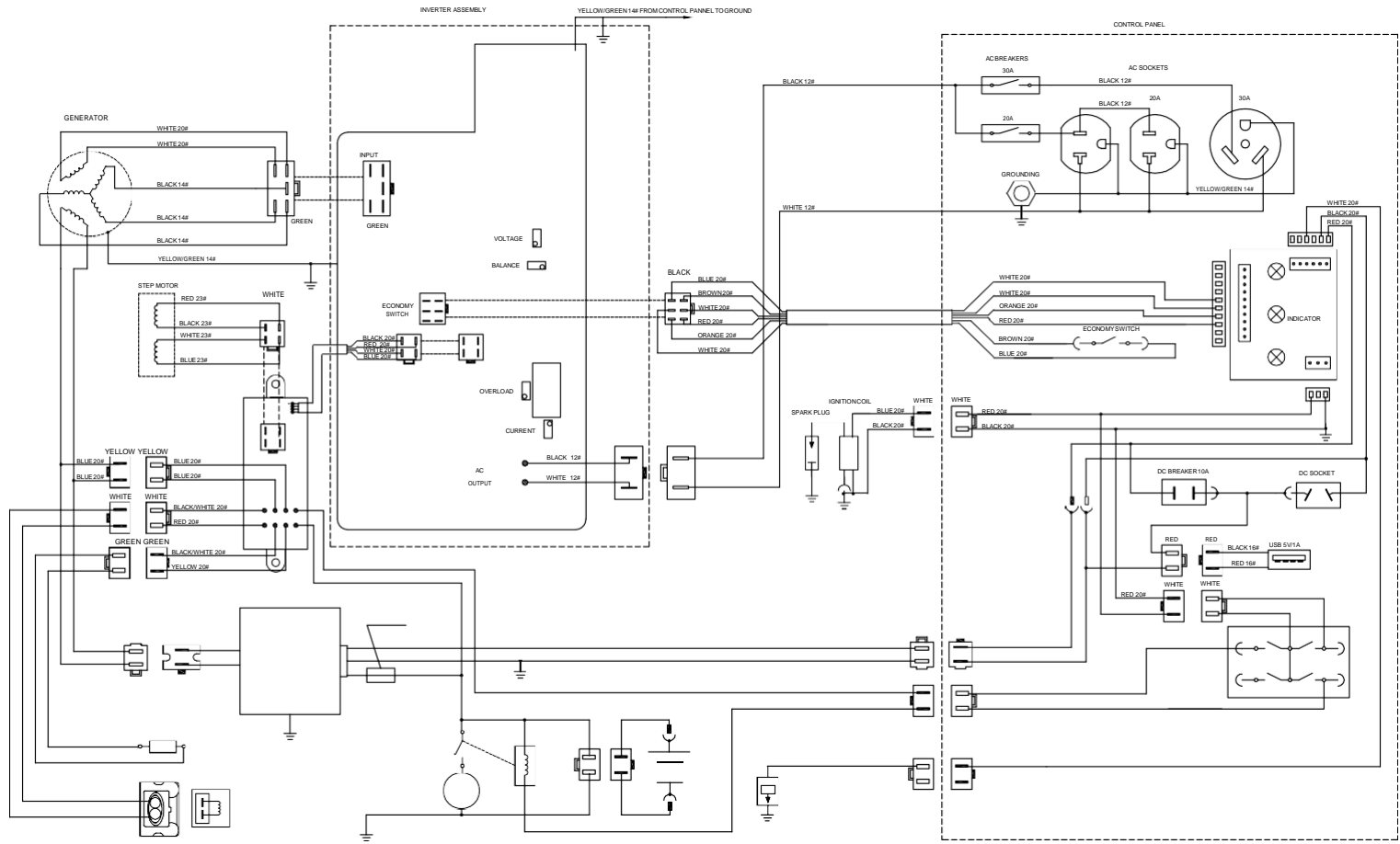


©2018 Energizer. Energizer and certain graphic designs are trademarks of Energizer Brands, LLC and related subsidiaries and are used under license by Bulider SAS. All other brand names are trademarks of their respective owners. Neither Bulider SAS nor Energizer Brands, LLC is affiliated with the respective owners of their trademarks.











## WARRANTY

The manufacturer warrants the product against defects in materials and workmanship for a period of 2 years from the date of purchase to the original purchaser. The guarantee applies when the product is used as a home tool. The warranty does not extend for failures due to normal wear and tear.

The manufacturer agrees to replace the spare parts that are classified as defective by a designated distributor. The manufacturer will not accept responsibility for the replacement of the machine, either partially or in full, and / or consequential damages.

The warranty does not cover failures due to:

- Insufficient maintenance.
- Assembly, adjustment or abnormal operation of the product.
- Spare parts that are subject to wear.

Nor does the guarantee extend to:

- Cost of freight and packaging.
- The use of the tool for any other purpose than for which it was designed
- Use and maintenance of the machine in a manner not described in the user's manual.

As part of our policy of continuous product improvement, we reserve the right to alter or modify specifications without prior notice. As a result, the product may differ from the information contained herein, but any alteration will only be implemented without prior notice if it is classified as an improvement of the previous specification.

**READ THE MANUAL CAREFULLY BEFORE USING THE MACHINE.**

When ordering spare parts, please quote the part number or code, this can be found in the parts list included in this manual.

Keep the purchase receipt; Without it, no guarantee will be valid.

In order to get help about your generator, we invite you to go through this link or to call us by phone +33 (0)8.20.20.22.68:

<https://services.swap-europe.com/contact>

You need to create a "ticket" via their platform.

- Login or create your account
- Put your tool reference
- Choose the subject of your request
- Explain your problem
- Attach these files: the invoice or receipt, the nameplate picture (serial number), the picture of the part you need (for example: pins on the transformer plug that broke away)

We offer you a warranty extension to 1 year. To profit it, please follow the below proceeding:

- Connect on the website:
- Insert your contact details
- Register your tool with:
  - The reference
  - The serial number
  - The date you bought the tool
- Generate automatically the PDF warranty certificate and print it.



**Declaration of conformity**

**BUILDER SAS**

**ZI, 32 RUE ARISTIDE BERGES – 312070 CUGNAUX – FRANCE**

**Declares that the machinery designated below:**

**Gasoline Generator**

**Model: *EZG2800i***

**Serial number:**

**Complies with the provisions of the Directive “machinery” 2006/42/CE and national laws transposing it:**

**Also complies with the following European directives:**

**EMC Directive 2014/30/EU**

**ROHS Directive 2011/65/EU**

**Noise directive 2000/14/CE Annex VI + 2005/88/CE**

**Also complies with European standards, with national standards and the following technical provisions:**

**EN ISO 8528-13:2016**

**EN 55012:2007/A1:2009**

**EN 61000-6-1:2007**

**Notified body of noise certificate: Intertek Testing & Certification Ltd. (Notified Body 0359)**

**Sound power level measured: 91.12 dB(A), K=0.89dB(A);**

**Guaranteed Sound power level: 92 dB(A);**

Responsible for the technical file: Michel Krebs

**Cugnaux, 18/10/2018**

Philippe MARIE / PDG